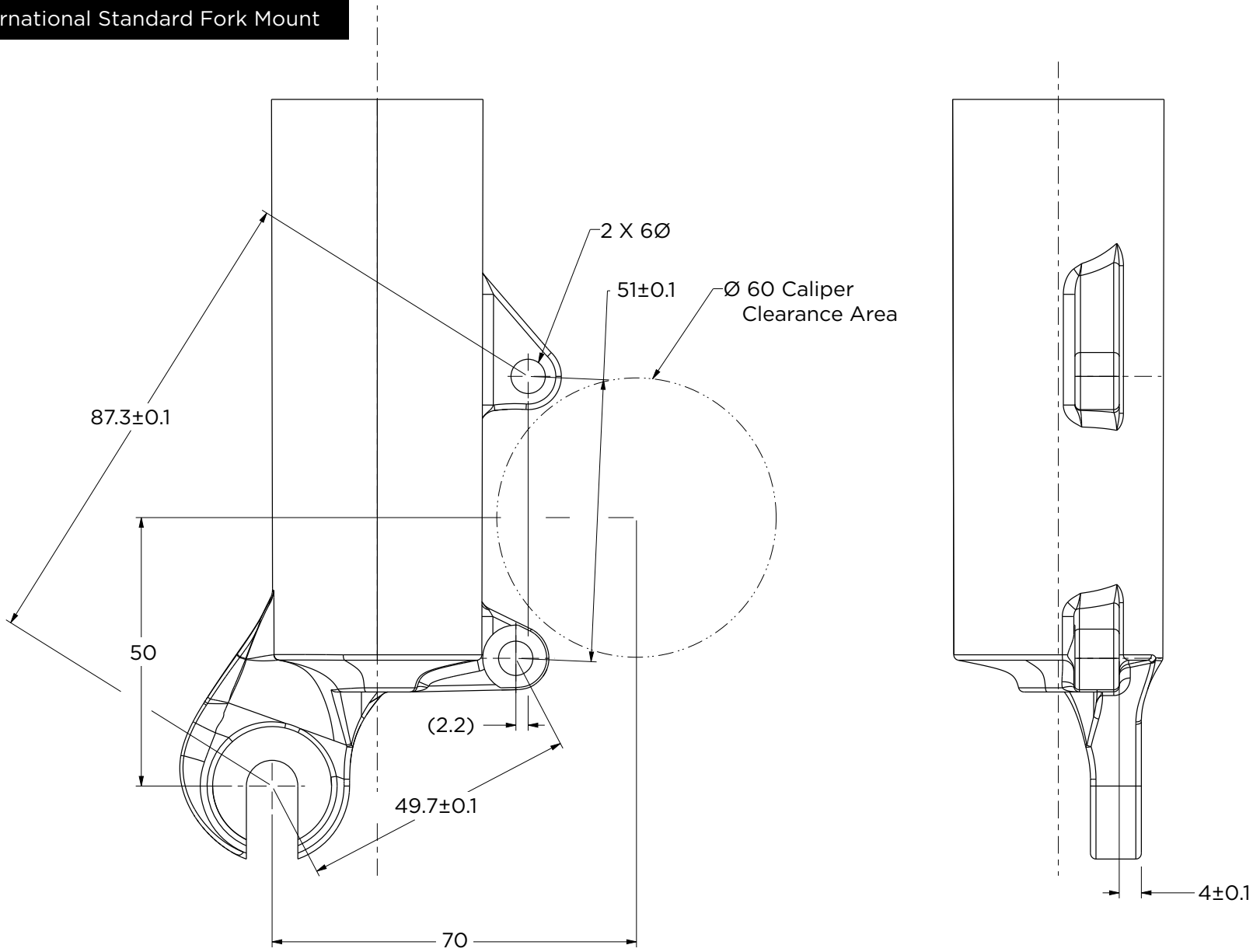
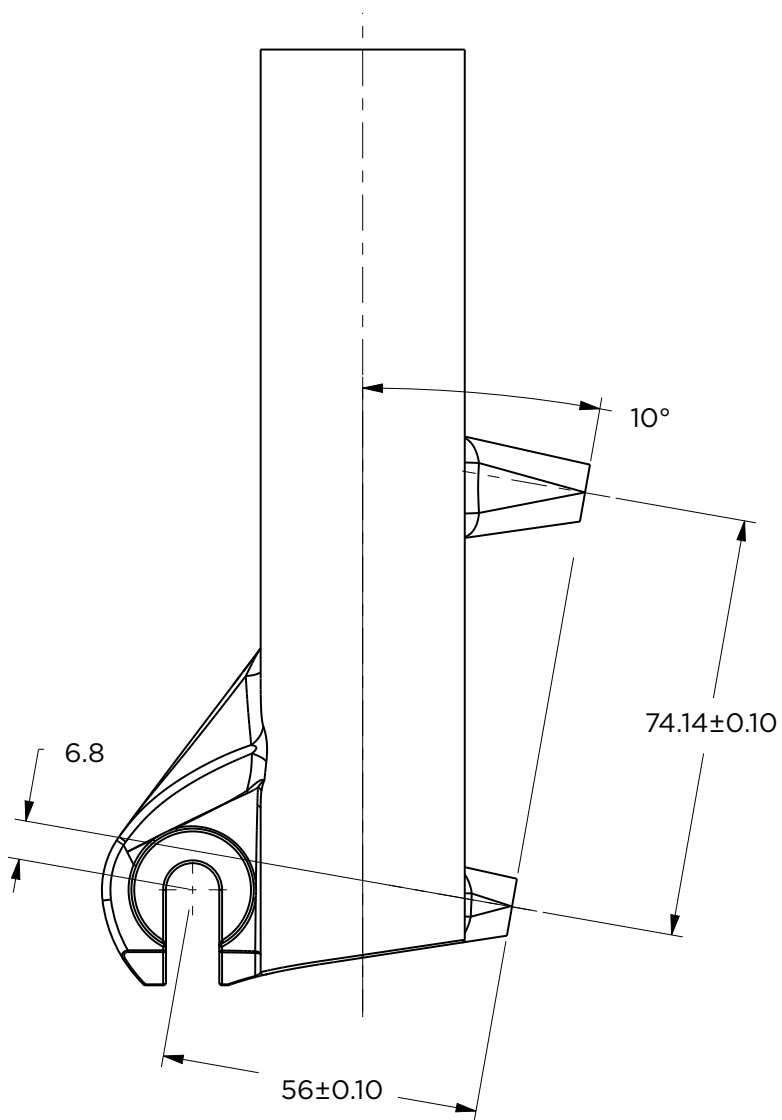


International Standard Fork Mount

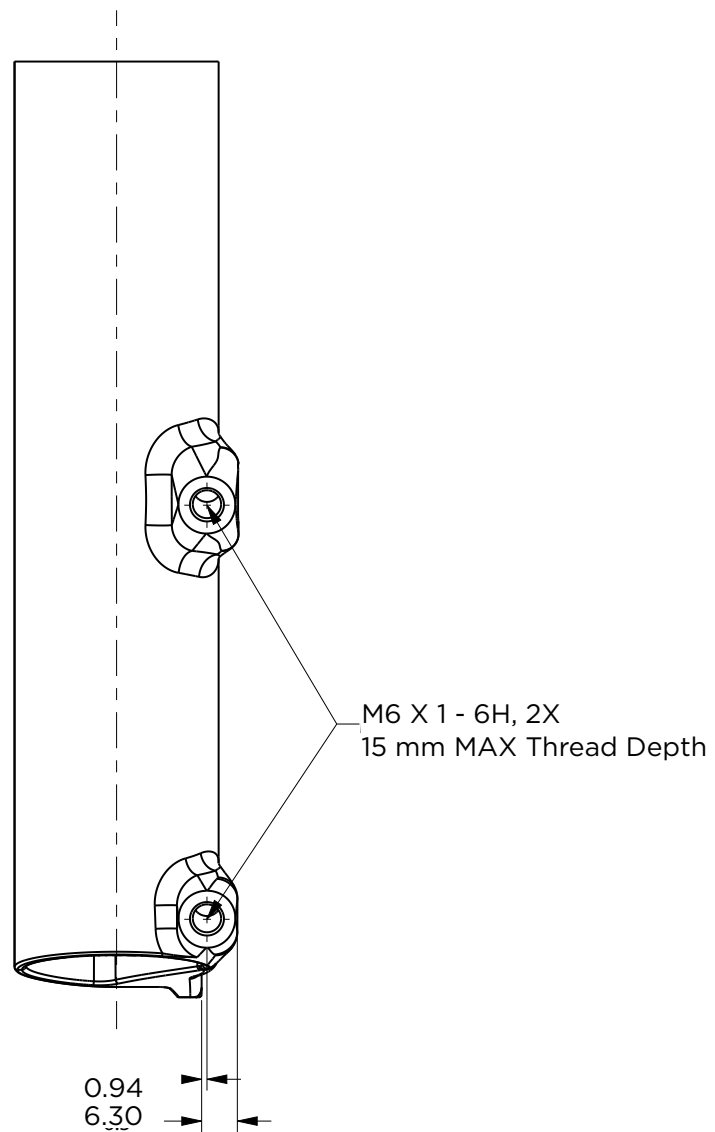


Name References: International Mount

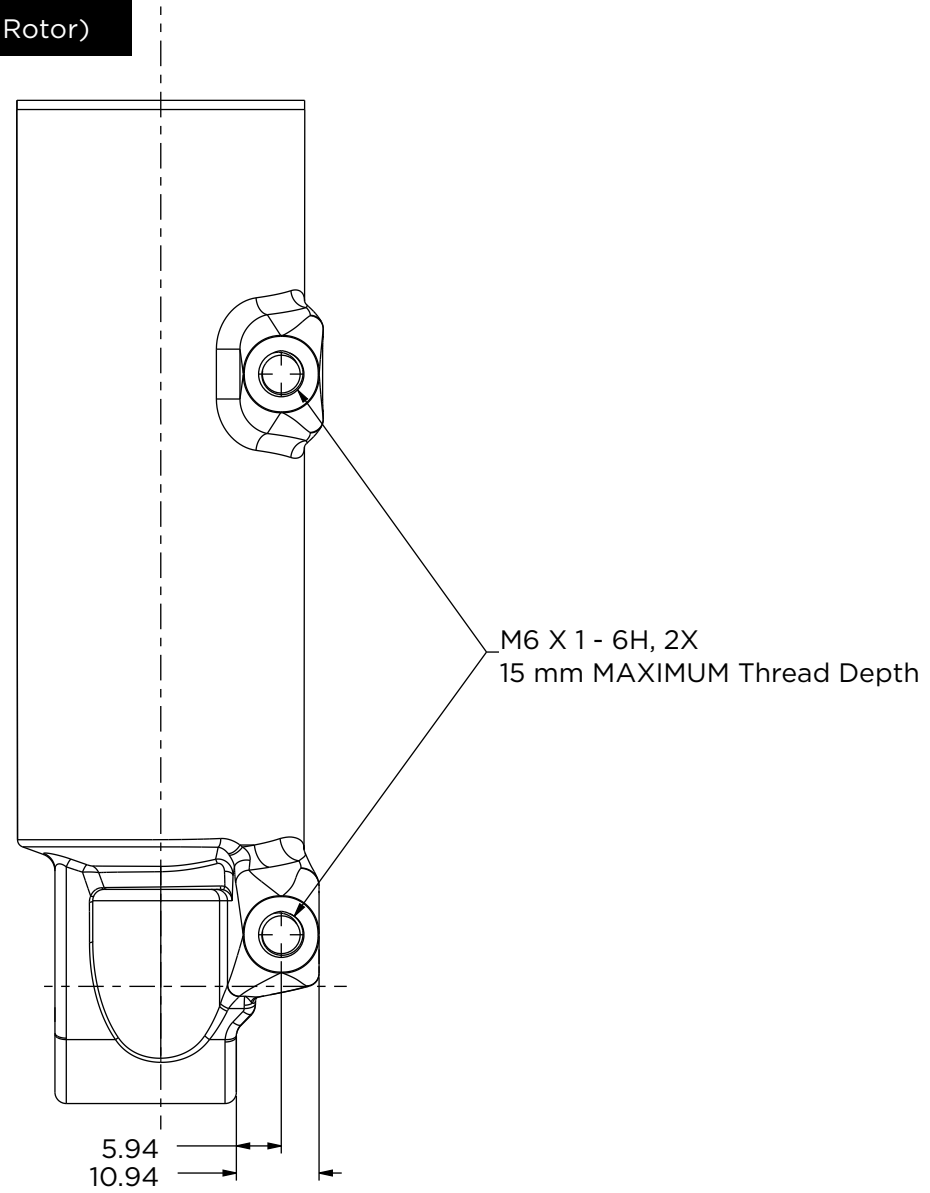
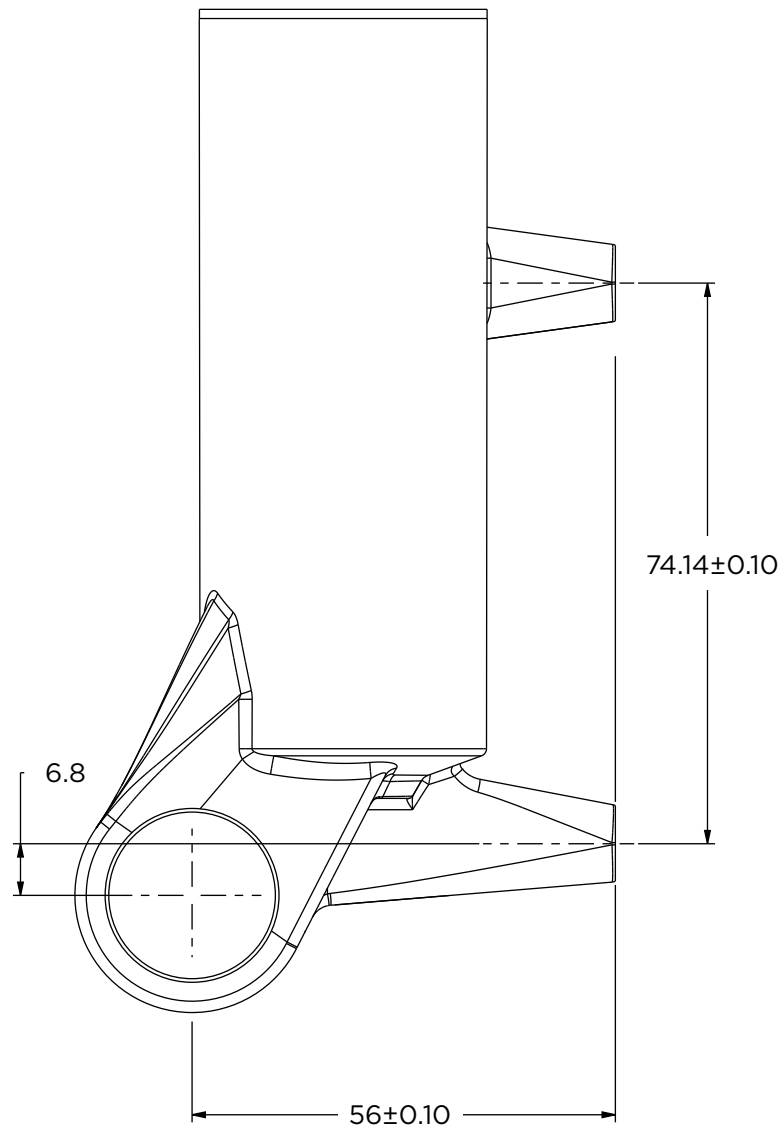
Fork Post Mount (Direct Mount for 160 mm Rotor)



Name References: Post Mount

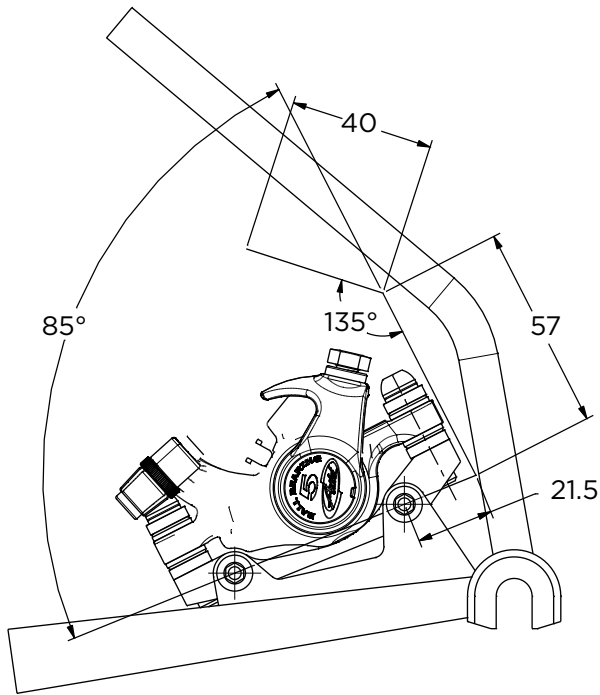


15 mm & 20 mm Thru-Axle Fork Post Mount (Direct Mount for 160 mm Rotor)

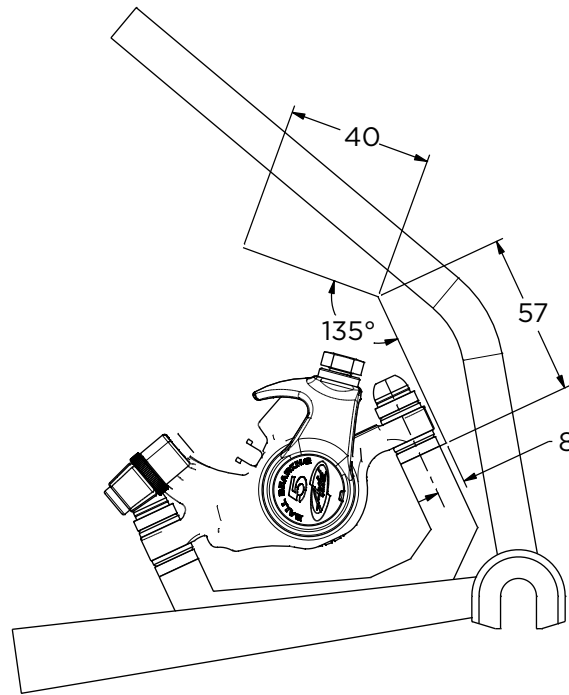


Name References: Post Mount

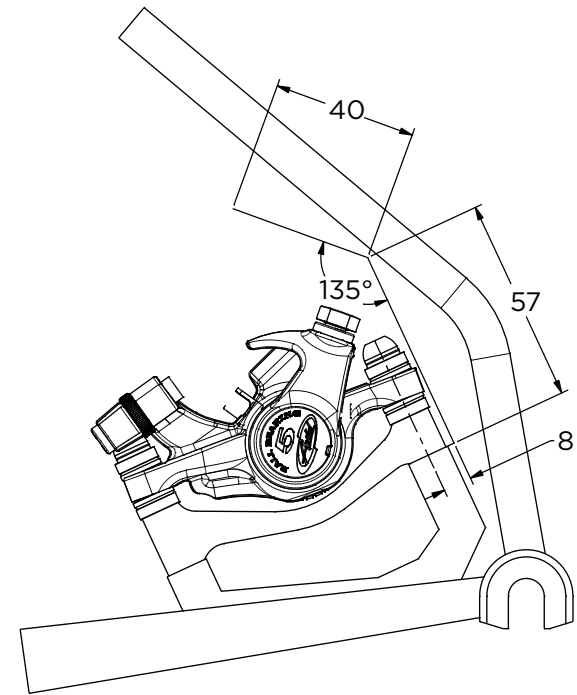
HYDRAULIC AND MECHANICAL DISC BRAKE REAR MOUNTS



[3] International Standard Rear



[4] Direct Mount (non step-up compatible)



[5] Direct Mount (step-up compatible)

NOTES

1. Clearance listed provide proper assembly and hex wrench access to CPS mounting bolts on all disc brake models, as well as the cable anchor bolts on ball bearing mechanical disc brake models. Tighter clearance may be possible on hydraulic disc brake models. Verifying clearance using 3D sales models on all desired configurations is highly recommended.
2. All clearance envelopes are measured from the center axis of International Standard mounting bolt holes or the top surface of the direct mount posts and center axis of the rear CPS mounting bolt.

[3] International Standard Rear:

Sketch applied to the smallest rotor size desired on frame. Clearance is sufficient for all larger rotor and bracket sizes. 140IS rear setup shown in view.

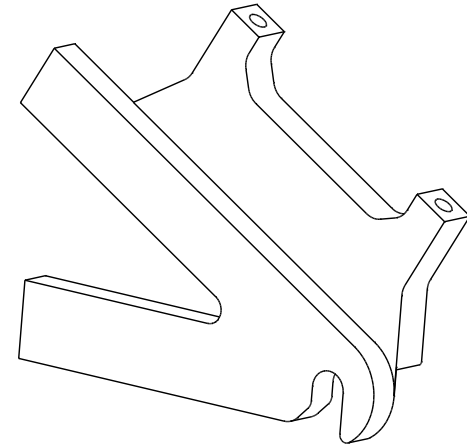
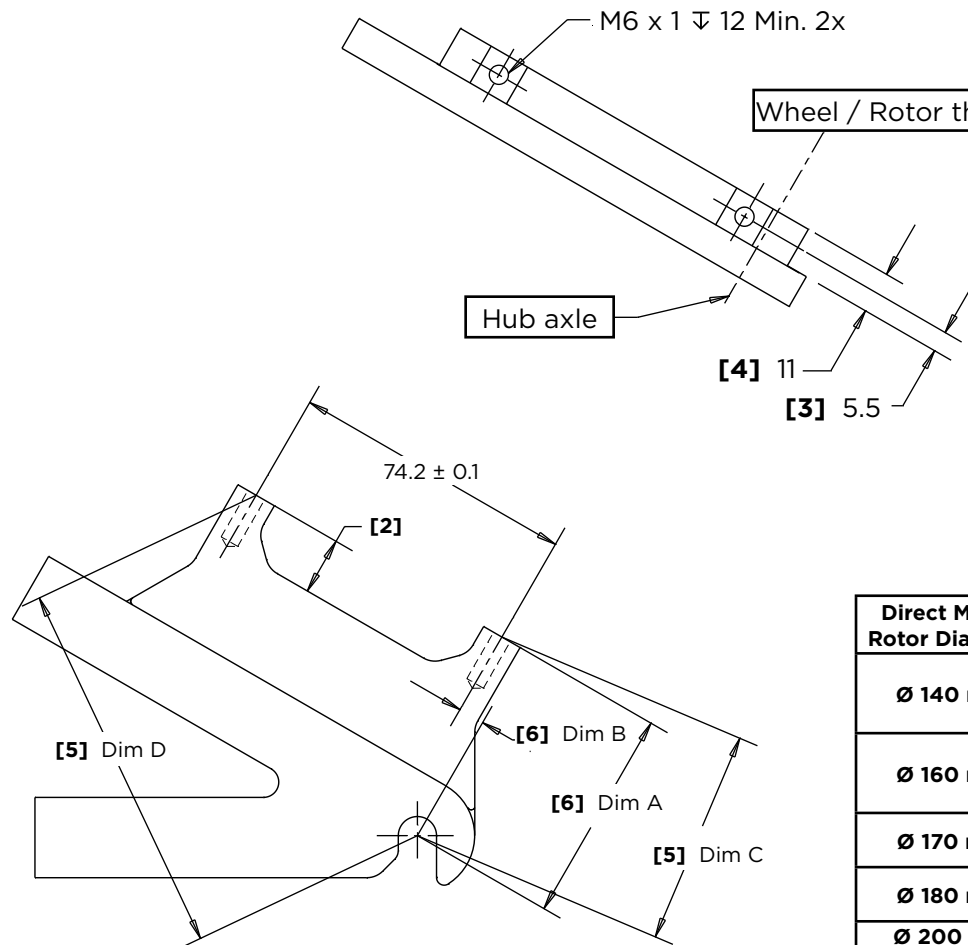
[4] Direct Mount (non step-up compatible):

Sketch applied to the smallest direct mount size desired on frame. Clearance is only sufficient for the desired mounting size. Caliper/seatstay interference may occur if larger rotor and bracket sizes are used. Direct mount 140 mm shown in view.

[5] Direct Mount (step-up compatible):

Sketch applied to the smallest direct mount size desired on frame. Clearance is sufficient for the desired mounting size and all larger rotor and bracket sizes. Direct mount 140 mm with step-up bracket for 160 mm rotor shown in view.

Direct Mount for Avid Rotors MY2012 Forward

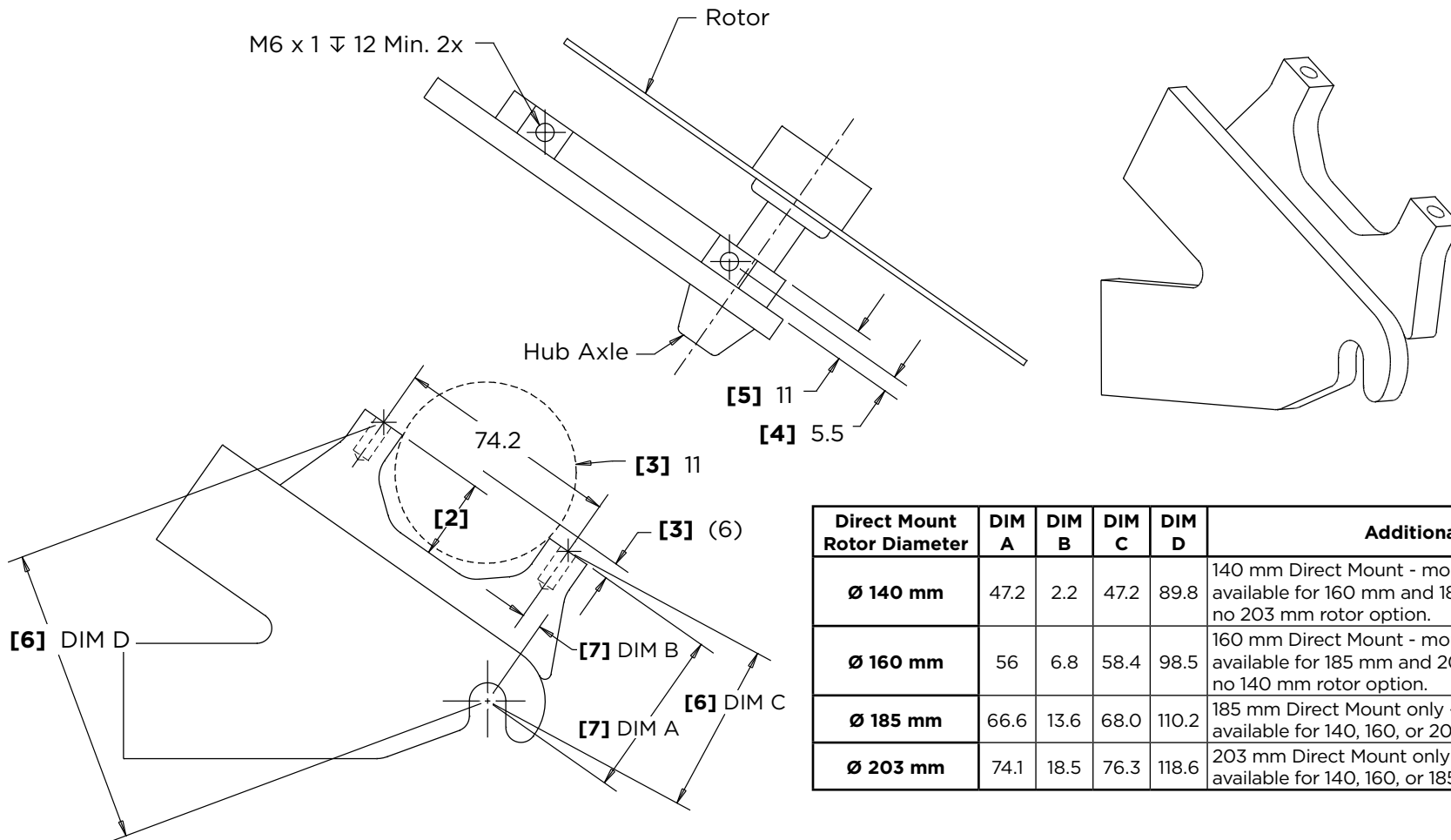


Direct Mount Rotor Diameter	DIM A	DIM B	DIM C	DIM D	Additional Notes
Ø 140 mm	47.2	2.2	47.2	89.8	140 mm Direct Mount - mounting hardware available for 160 mm and 180 mm rotors; no 200 mm rotor option.
Ø 160 mm	56	6.8	58.4	98.5	160 mm Direct Mount - mounting hardware available for 180 mm and 200 mm rotors; no 140 mm rotor option.
Ø 170 mm	60.3	9.9	61	103	170 mm Direct Mount - mounting hardware available for 170 mm rotors.
Ø 180 mm	64.7	11.8	65.7	107.6	180 mm Direct Mount - mounting hardware available for 200 mm rotors.
Ø 200 mm	73.3	16.8	75.2	116.9	200 mm Direct Mount only.

NOTES

1. Check fit with Avid caliper and rotor.
- [2] 15 mm **minimum** clearance for caliper.
- [3] Measured from inside dropout face.
- [4] Recommended **maximum** thickness.
- [5] True distance.
- [6] Perpendicular to thread axis and mounting surface.

Rear Post Mount for Avid Rotors Prior to MY2012



Direct Mount Rotor Diameter	DIM A	DIM B	DIM C	DIM D	Additional Notes
Ø 140 mm	47.2	2.2	47.2	89.8	140 mm Direct Mount - mounting hardware available for 160 mm and 180 mm rotors; no 203 mm rotor option.
Ø 160 mm	56	6.8	58.4	98.5	160 mm Direct Mount - mounting hardware available for 185 mm and 203 mm rotors; no 140 mm rotor option.
Ø 185 mm	66.6	13.6	68.0	110.2	185 mm Direct Mount only - no mounting hardware available for 140, 160, or 203 mm rotors.
Ø 203 mm	74.1	18.5	76.3	118.6	203 mm Direct Mount only - no mounting hardware available for 140, 160, or 185 mm rotors.

NOTES

1. Check fit with Avid caliper and rotor.
- [2] 15 mm **minimum** clearance for caliper.
- [3] Caliper clearance circle.
- [4] Measured from inside dropout face.
- [5] Recommended **maximum** thickness.
- [6] True distance.
- [7] Perpendicular to thread axis and mounting surface.