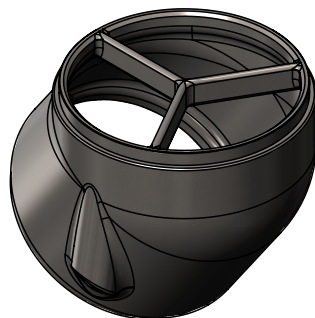
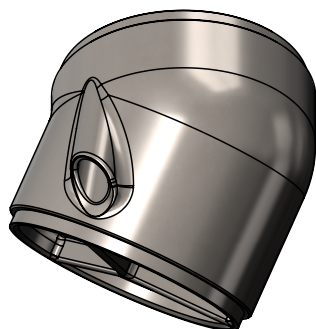
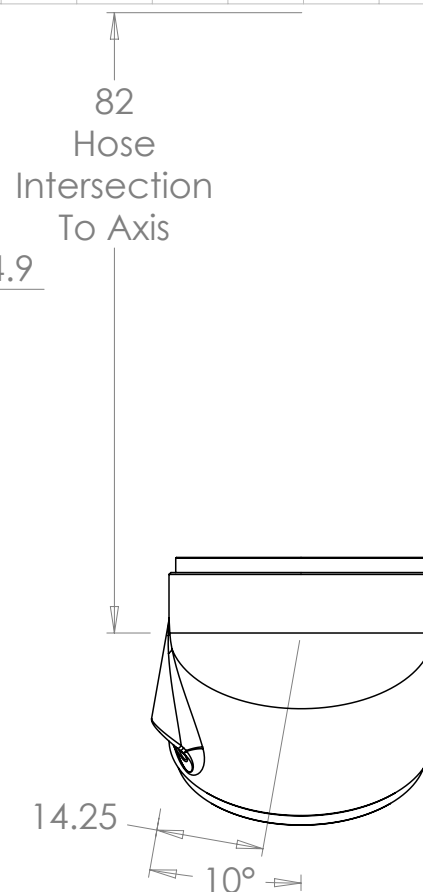
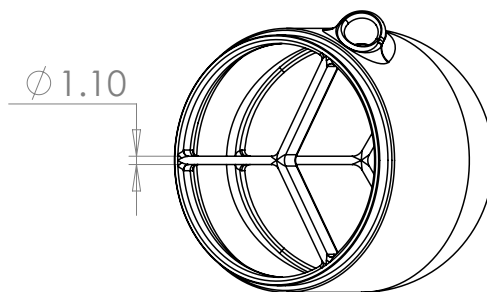
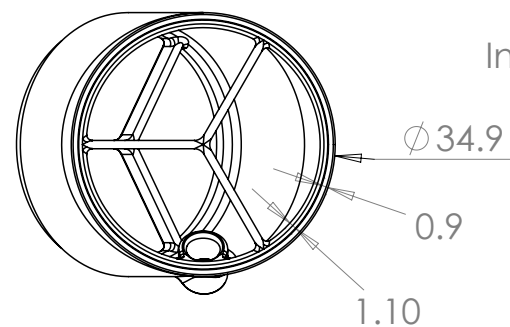
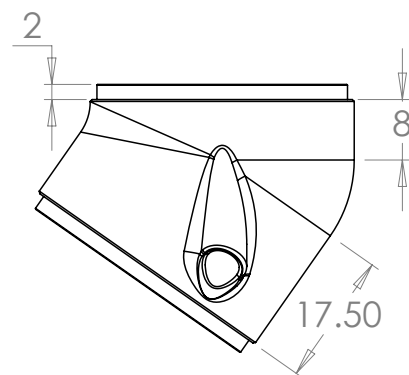
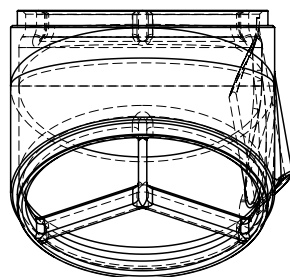
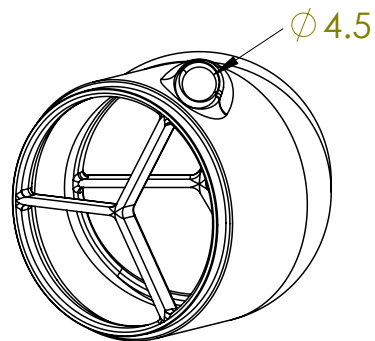
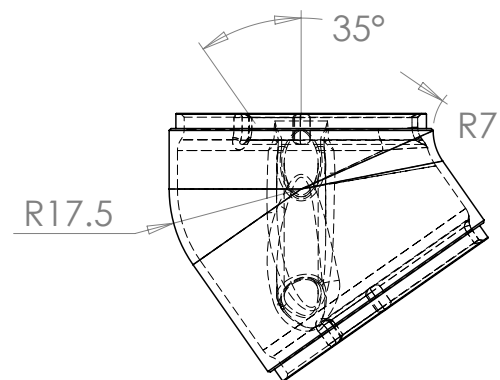


Volume = 4238.5 mm<sup>3</sup>

Mass = 33.9 g

Actual = 33.6 g



PROPRIETARY AND CONFIDENTIAL

THE INFORMATION CONTAINED IN THIS DRAWING IS THE SOLE PROPERTY OF PETER VERDONE DESIGNS. ANY REPRODUCTION IN PART OR AS A WHOLE WITHOUT THE WRITTEN PERMISSION OF PETER VERDONE DESIGNS IS PROHIBITED.

MATERIAL:  
3D Printed 316L Stainless Steel

FINISH:

COMMENTS:

UNLESS OTHERWISE SPECIFIED:  
DIMENSIONS ARE IN MILLIMETERS

TOLERANCES:  
ANGULAR: MACH X ± .5 BEND X ± 1  
ZERO PLACE DECIMAL X ± .5  
ONE PLACE DECIMAL X.X ± .2  
TWO PLACE DECIMAL X.XX ± .05

INTERPRET GEOMETRIC  
TOLERANCING PER: ASME Y14.5M

Some parts may include a model-  
based definition to be interpreted  
per ASME Y14.41-2012

TITLE:

Printed Bend Piece

PETER VERDONE DESIGNS  
FAIRFAX, CA 94930  
(415) 686-0257

PETERVERDONE@GMAIL.COM  
WWW.PETERVERDONE.COM

SCALE: 1:1

5/2/2021

REV